

Assembly Instructions

CHRISTMAS VILLAGE Advent Calendar



DIY Printable PDFs



© Copyright Tina Douville. This document is for the original purchaser's use only, and may not be shared or re-sold in digital or printed form without the expressed written consent of the author.

Acceptable use: Finished products made from this set may be used by the original purchaser in any way including giving as gifts or selling for profit.



Print on plain white card stock paper. You may choose to do this on a color printer at home or take the PDF file to a local print shop.

A 65 lb (176 g/m²) weight is ideal as it is light enough to make folding easy, but still produces a sturdy result. However you may safely go up to 100 lb (271 g/m²) stock, and still get a good result.

Do not use a coated paper as the folded edges will fray.



Gather required materials. These include a good pair of scissors, a glue stick, and a ruler or straight edge to be used in conjunction with a bone folder, if you have one.



Cut the template out. Refer to diagram below, left. The cut lines are indicated by the solid black line.

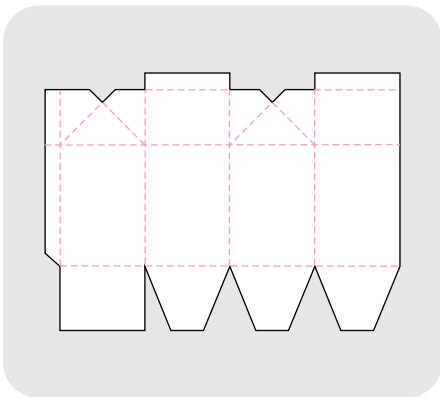


Diagram for cutting and folding:

- Cut lines are solid and black.
- Fold lines are dashed and pink.



Recommended: Pre-score your fold lines with a bone folder and ruler or straight edge.



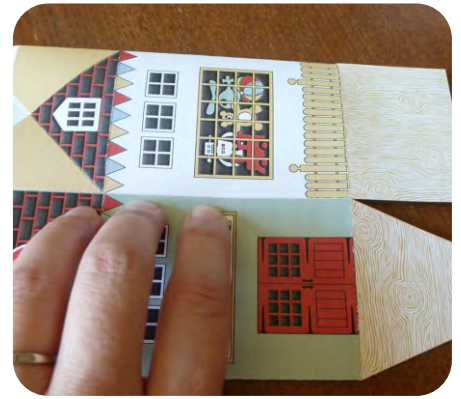
Pre-fold the lines you have just scored and then flatten the template back out again.



Apply glue to the side tab. Cover the surface evenly



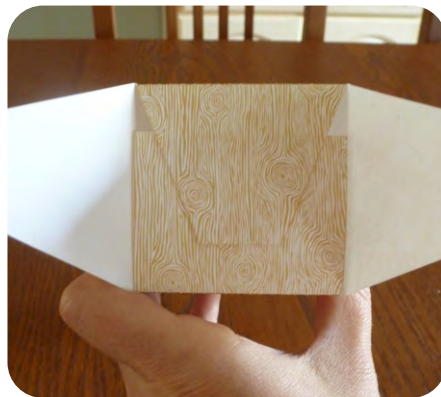
Line the tab up under the far side to form a box.



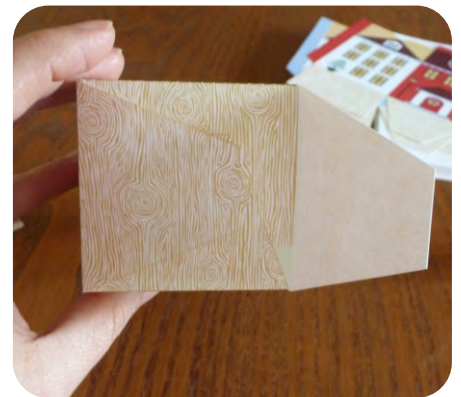
At this point it's a good idea to flatten the box and press along the seal you have just created to ensure it adheres well.



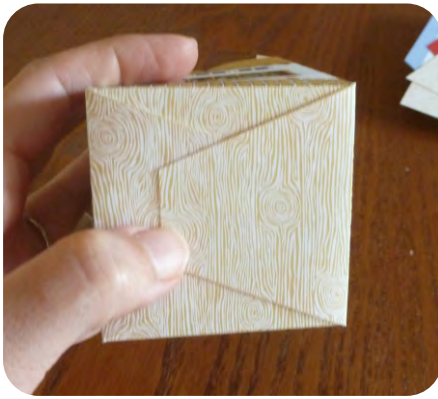
To begin forming the base, fold up the rectangular tab.



Next apply glue and fold down the tab that lies opposite to the rectangular tab.



Apply glue and fold in one of the side tabs.



Finally, apply glue and fold in the last side tab.



Set the box down and use a long instrument to press down and secure the base tabs from above. You could use your bone folder, ruler, or the fat end of a pencil.



Squeeze the tops together to form the peak of the roof.



Fasten the box shut with a miniature clothespin (typically available in dollar stores or craft supply stores). Or, be creative in your fastening technique. You might decide to punch holes and fasten with ribbon, or fill the boxes first and then glue them shut.



I hope you enjoy a very merry countdown to Christmas filled with squeals of delight at the opening of each Christmas village house!